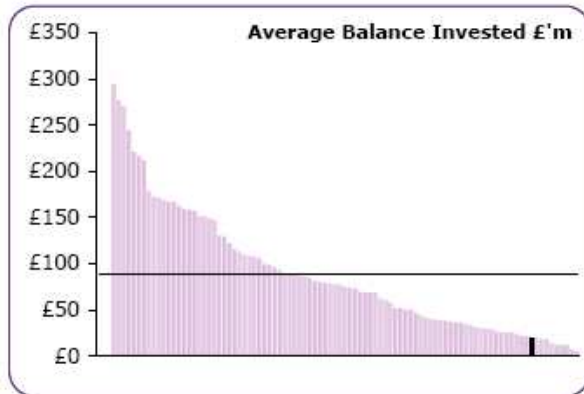


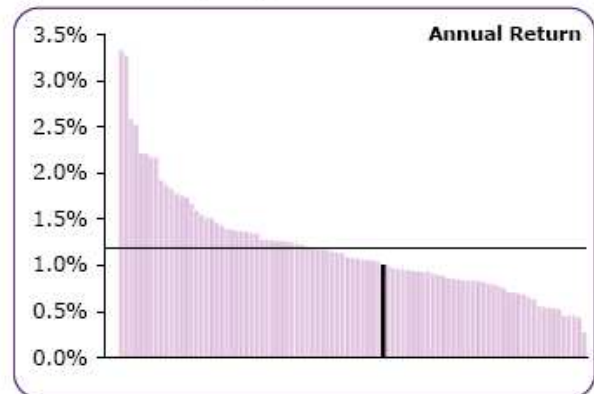
## Appendix 2:

### Benchmarking Data

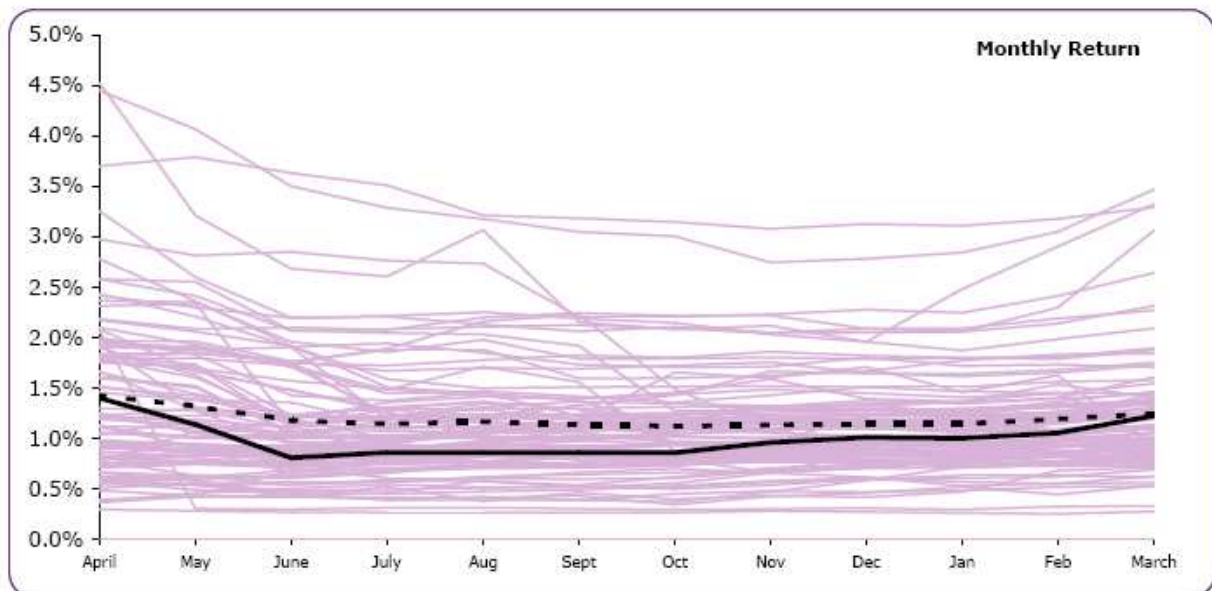
#### COMBINED IN-HOUSE INVESTMENTS (excluding impaired investments)



Tamworth 19.1 Avg 88.1

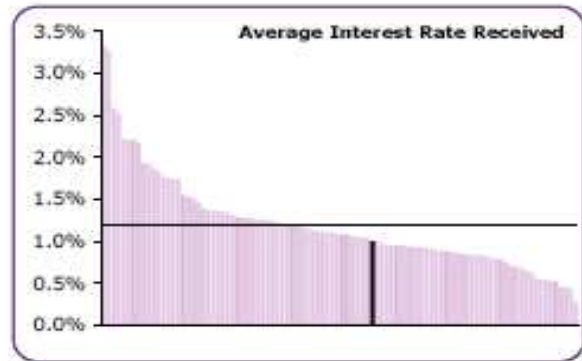
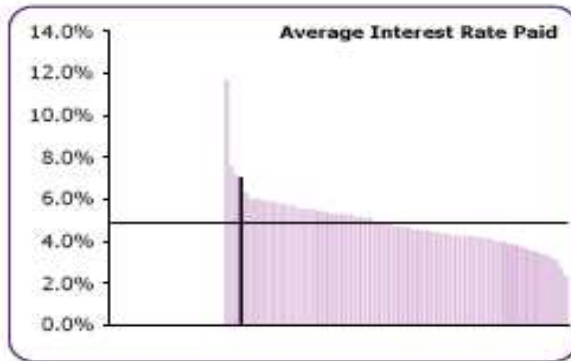


Tamworth 0.99% Avg 1.19%



Monthly Return (April 10 - March 11)													
	April	May	June	July	Aug	Sept	Oct	Nov	Dec	Jan	Feb	March	Year
Av Bal £'m	16.94	16.78	17.87	18.60	19.94	20.34	21.68	21.50	20.80	20.82	18.94	14.69	19.08
Earned £'k	19.5	16.3	11.9	13.7	14.6	14.5	15.9	17.0	17.9	17.7	15.4	15.3	189.6
% Return	1.40%	1.14%	0.81%	0.86%	0.86%	0.87%	0.86%	0.96%	1.01%	1.00%	1.06%	1.23%	0.99%
Average	1.43%	1.32%	1.18%	1.15%	1.17%	1.14%	1.12%	1.14%	1.15%	1.15%	1.19%	1.25%	1.19%
Margin	-0.03%	-0.18%	-0.37%	-0.28%	-0.31%	-0.28%	-0.26%	-0.17%	-0.13%	-0.14%	-0.14%	-0.02%	

## Interest Analysis 2010/11



### Annual Average Investment

	Authority			Group Total		
	Av. Balance £'m	Interest £'k	Rate	Balance £'m	Interest £'k	Average Rate
Variable rate	7.6	59.7	0.8%	3,163	29,014	0.8%
Short-term fixed	8.9	71.5	0.8%	4,249	45,605	1.1%
Long-term fixed	2.6	58.5	2.2%	981	30,371	3.5%
Externally Managed	0.0	0.0	na	438	5,300	1.4%
<b>Total</b>	<b>19.1</b>	<b>189.6</b>	<b>1.0%</b>	<b>8,830</b>	<b>110,290</b>	<b>1.2%</b>

### Annual Average Borrowing

	Authority			Group Total		
	Av. Balance £'m	Interest £'k	Rate	Balance £'m	Interest £'k	Average Rate
Variable rate	0.0	0.0	na	625	13,937	1.4%
Short-term fixed	0.0	0.0	na	582	2,440	0.6%
Long-term fixed	22.2	1,549.5	7.0%	13,824	710,385	5.2%
LOBO	0.0	0.0	na	3,831	166,446	4.5%
<b>Total</b>	<b>22.2</b>	<b>1,549.5</b>	<b>7.0%</b>	<b>19,176</b>	<b>908,487</b>	<b>4.9%</b>